

# Biotinylated Human GPRC5D Protein-VLP

Cat. No. GPR-HM05PB

| Description      |   |
|------------------|---|
| Source           | Recombinant Biotinylated Human GPRC5D Protein-VLP is expressed from HEK293.<br>It contains Met1-Val345. |
| Accession        | Q9NZD1-1  |
| Molecular Weight | The target protein has a predicted MW of 39.6 kDa.  |
| Endotoxin        | Less than 1EU per µg by the LAL method.   |
| Purity           | > 95% as determined by HPLC   |

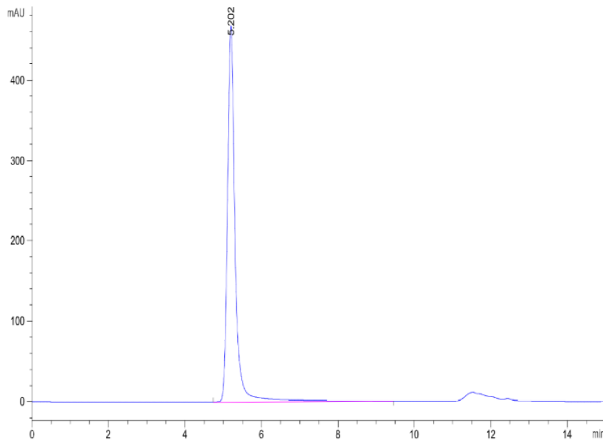
| Formulation and Storage |  |
|-------------------------|--|
| Formulation             | Supplied as 0.22µm filtered solution in PBS, 300mM L-Arginine (pH 7.4).  |
| Storage                 | Valid for 12 months from date of receipt when stored at -80°C. Recommend to aliquot the protein into smaller quantities for optimal storage. Please minimize freeze-thaw cycles. |

**Background**

Chimeric antigen receptor (CAR) T cells, a type of cell-based immunotherapy, have shown some promising results in multiple myeloma, a bone marrow cancer. The orphan G protein-coupled receptor, class C group 5 member D (GPRC5D), normally expressed only in the hair follicle. Using quantitative immunofluorescence, we determined that GPRC5D protein is expressed on CD138 MM cells from primary marrow samples with a distribution that was similar to, but independent of, BCMA.

## Assay Data

### SEC-HPLC

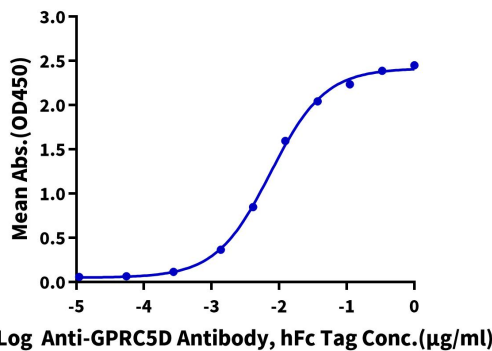


The purity of Biotinylated Human GPRC5D VLP is greater than 95% as determined by SEC-HPLC.

### ELISA Data

#### Biotinylated Human GPRC5D VLP ELISA

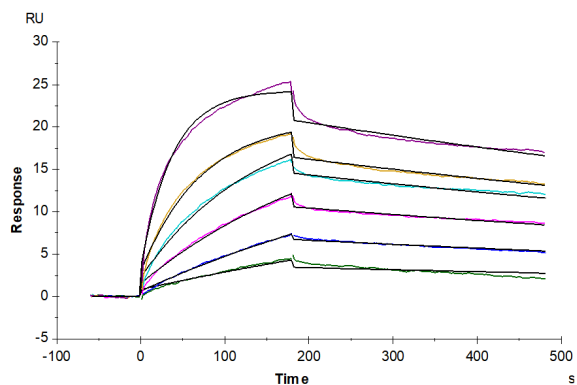
0.5µg Biotinylated Human GPRC5D VLP Per Well



Immobilized Biotinylated Human GPRC5D VLP at 5µg/ml (100µl/well) on the streptavidin precoated plate (5µg/ml). Dose response curve for Anti-GPRC5D Antibody, hFc Tag with the EC50 of 7.4ng/ml determined by ELISA (QC Test).

Assay Data

SPR Data



Biotinylated Human GPRC5D VLP captured on CM5 Chip via Streptavidin can bind Anti-GPRC5D Antibody with an affinity constant of 0.28 nM as determined in SPR assay (Biacore T200) (QC Test).